

Circularity

2023

BROUGHT TO YOU BY



AUSTRALIAN
CIRCULAR
ECONOMY
HUB
PLANET ARK

21 NOV | 2:05 - 3:05 PM

Collaborative LGAs: Hubs and Hotspots Working Together

Opening Keynote



George Osborne
Hume City Council



Caitlin Phillips-Peddlesden
RMIT Activator

Moderator



Tuba Kocaturk
MInD Lab.
Deakin
University



Emma Avery
EA Sustainability



Stefan Kaufman
BehaviourWorks,
Monash University



Guy Walsh
Living Edge



Marcus Geisler
Eastern Metropolitan
Regional Council

Circularity

2023

BROUGHT TO YOU BY



AUSTRALIAN
CIRCULAR
ECONOMY
HUB
PLANET ARK

21 NOV | 2:05 - 3:05 PM

Collaborative LGAs: Hubs and Hotspots Working Together

Opening Keynote



George Osborne
Hume City Council



**Caitlin Phillips-
Peddlesden**
RMIT Activator

Circularity

2023

BROUGHT TO YOU BY



AUSTRALIAN
CIRCULAR
ECONOMY
HUB
PLANET ARK

21 NOV | 2:05 - 3:05 PM

Collaborative LGAs: Hubs and Hotspots Working Together

Moderator



Tuba Kocaturk

MInD Lab.
Deakin University



Emma Avery

EA Sustainability



Stefan Kaufman

BehaviourWorks,
Monash University



Guy Walsh

Living Edge



Marcus Geisler

Eastern Metropolitan
Regional Council



Circularity

2023

BROUGHT TO YOU BY



AUSTRALIAN
CIRCULAR
ECONOMY
HUB
PLANET **ARK**

21 Nov | 2:05 – 3:05 PM

Collaborative LGAs working together

Emma Avery, EA Sustainability

Circularity

2023

BROUGHT TO YOU BY

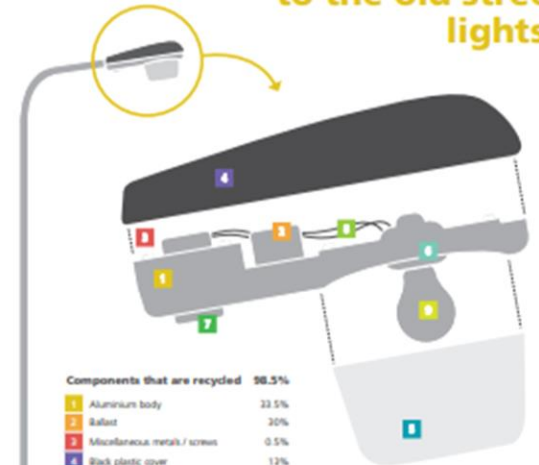


AUSTRALIAN
CIRCULAR
ECONOMY
HUB
PLANETARK



Your street lights are being changed over to more energy efficient, brighter and better lights. The new lights will last longer and save electricity costs.

So what happens to the old street lights?



Components that are recycled 98.5%

1	Aluminium body	33.5%
2	Ballast	20%
3	Miscellaneous metals / screws	0.5%
4	Black plastic cover	12%
5	Clear lens	16.5%
6	Ceramic bulb holder	2%
7	Photo Electric cell	1%
8	Copper wires	0.5%
9	80W Mercury Vapour lamp (bulb)	1.5%

Components that go to landfill 1.5%

	Plastic plugs and miscellaneous items	1.5%
--	---------------------------------------	------

Source: Percentages are calculated by weight



These organisations are making the recycling of street lights possible.

Circularity

2023

BROUGHT TO YOU BY



AUSTRALIAN
CIRCULAR
ECONOMY
HUB
PLANETARK



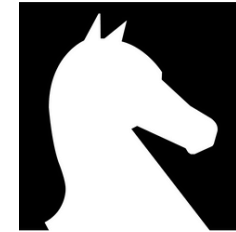
GLEN EIRA
CITY COUNCIL



Bayside
CITY COUNCIL



BOROONDARA
City of Harmony



WHITEHORSE
CITY COUNCIL



CITY OF
MONASH



Maroondah
City Council



Maribyrnong
CITY COUNCIL



City of
STONNINGTON



Yarra
Ranges
Council



Brimbank
City Council



Nillumbik
The Green Wedge Shire



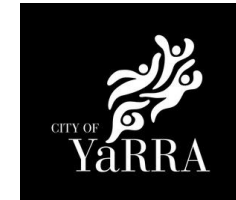
Moonee Valley
City of



Sustainability
Victoria



VICTORIA
State
Government



CITY OF
YARRA



Knox City Council

Circularity

2023

BROUGHT TO YOU BY



AUSTRALIAN
CIRCULAR
ECONOMY
HUB
PLANET ARK

21 NOV | 2:05 - 3:05 PM

Collaborative LGAs: Hubs and Hotspots Working Together

Moderator



Tuba Kocaturk

MInD Lab.
Deakin University



Emma Avery

EA Sustainability



Stefan Kaufman

BehaviourWorks,
Monash University



Guy Walsh

Living Edge



Marcus Geisler

Eastern Metropolitan
Regional Council

Circularity

2023

BROUGHT TO YOU BY



AUSTRALIAN
CIRCULAR
ECONOMY
HUB
PLANET ARK

21 Nov | 14:05 – 15:05

The roles of local government in regional CE transitions

Stefan Kaufman^{1a}, Ruth Lane^{1b}, Joanna Vince²

With thanks to

Celine Klemm^{1a}, Kim Borg^{1a}, Natalia de Miranda Grilla², Chamila Weerathunghe Arachchige^{1b}, Corey Ferguson^{1b}

1. Monash University (a = BehaviourWorks Australia, Monash Sustainable Development Institute, b = Human Geography, Faculty of Arts)
2. University of Tasmania (School of Social, College of Arts, Law and Education)

"I think perhaps the best option for your researchers is to actually get out in the field and work in a local government.

I don't have staff to undertake these naval gazing research papers. I don't even have enough staff to undertake our legislated functions.

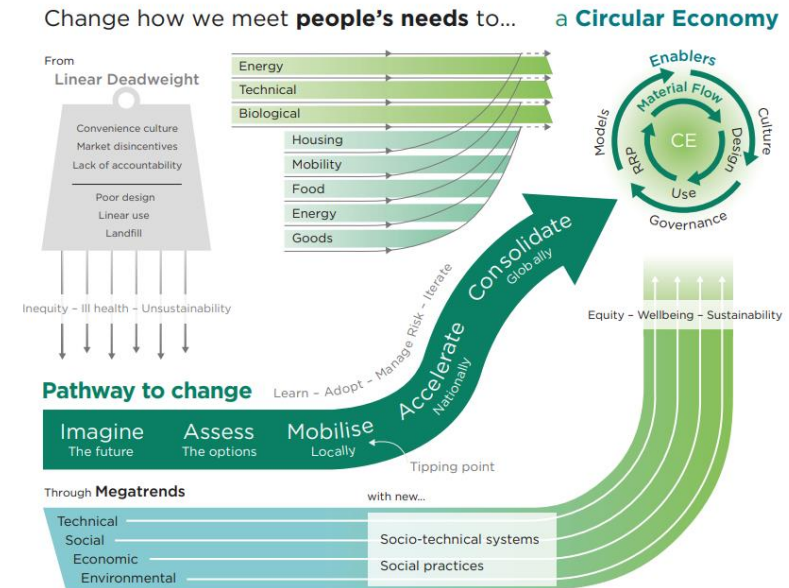
Which of our legislated functions should we not do so we can provide you with research information so you can create yet another document for us to have to update?"

Source: Remote area council CEO declining to complete our survey

IP5.02.03: Governing community-based resource recovery and circular economy initiatives

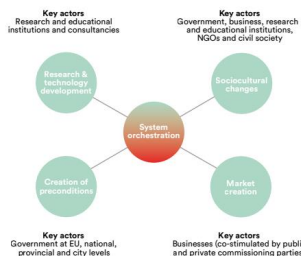
RQ: *What is the capacity of regional and remote local government to facilitate regional CE transitions? Where can we help?*

- In what ways are local governments intermediaries and transition brokers?
- What's different outside of major cities?
 - Circular economy, or circular society?
 - Extractive regional economies?



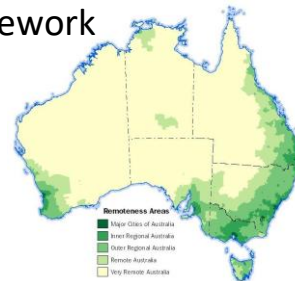
2022

- Situation assessments
- Literature review
- Desktop survey of orgs



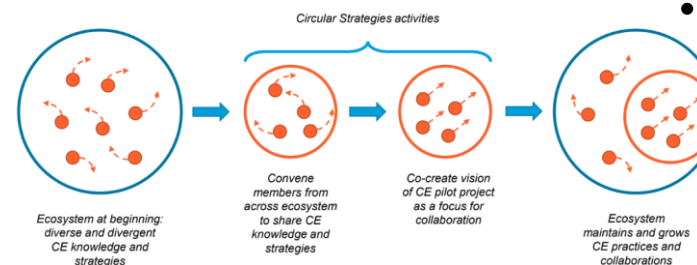
2023 Mar-Nov

- Survey of CE gov capacity
- Provisional reg/remote network governance AU framework



2023 Nov-Dec

- Share results Ace Hub
- Seek third party support to expand analysis and pilots



2024-2025

- Initiate co-design pilot(s) on network governance solutions
- Evaluation, scaling, translation

SAME, SAME BUT DIFFERENT?

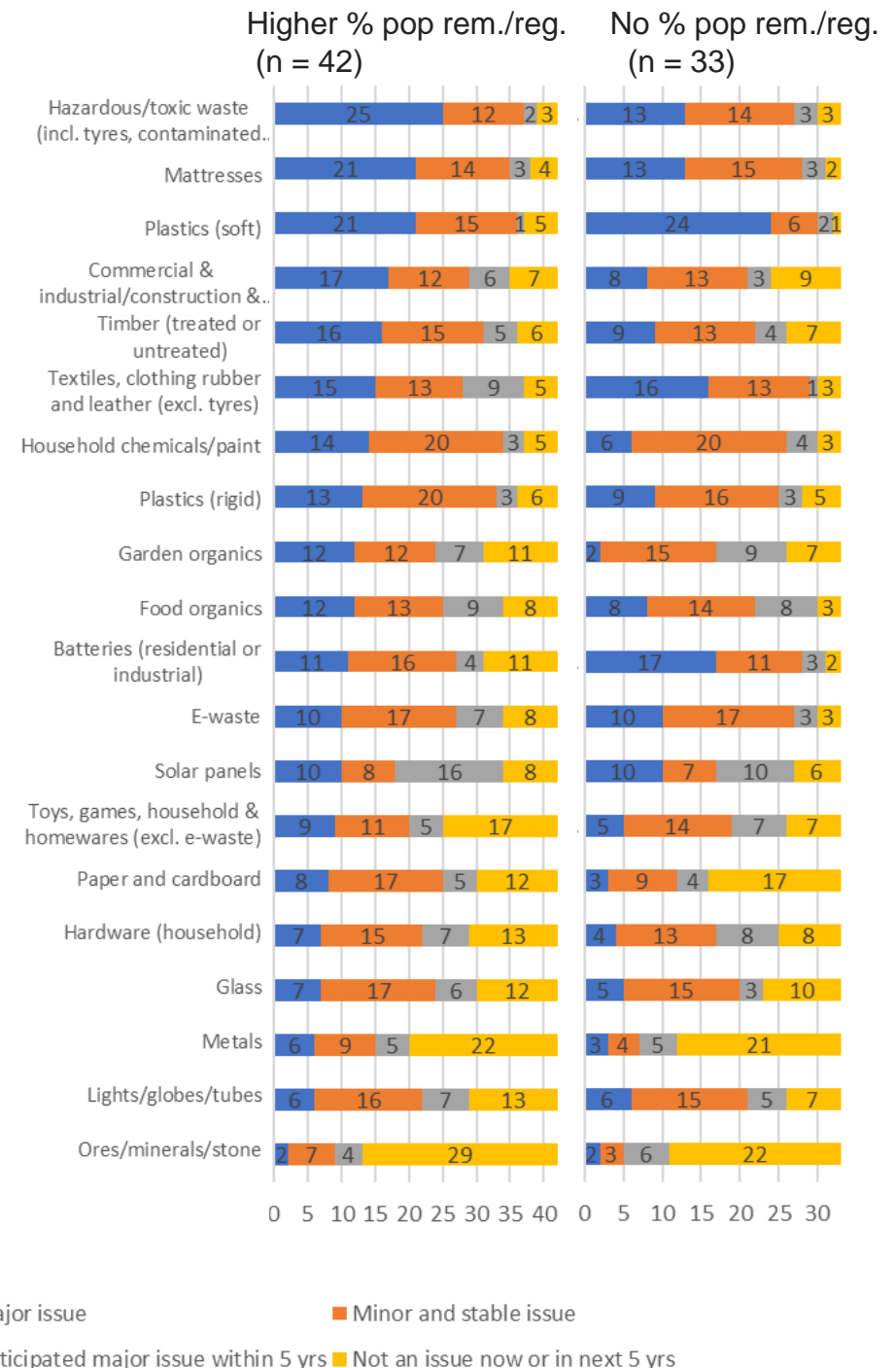
Very preliminary results from survey of LGs
84/534 participants, 51 from remote and regional areas

Different current issues

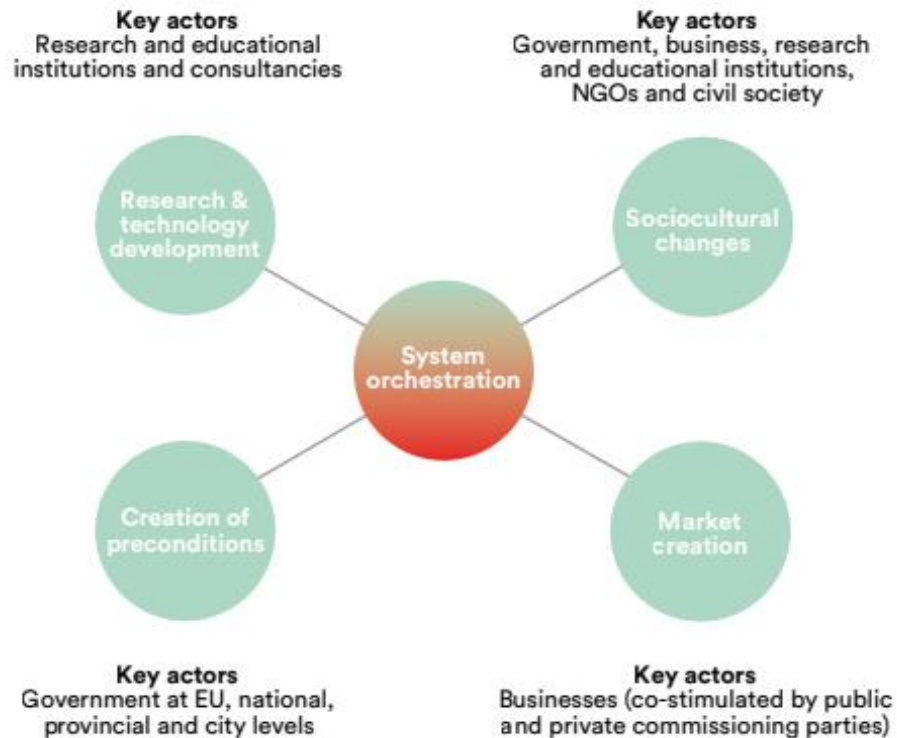
- Haz waste (1st v 4/5)
- Mattresses (2nd v 4/5)
- Plastics – soft (3rd v 1)
- C&I/C&D (4th v ...)
- Timber (5th v ...)

Emerging issues regionally








- Solar panels
- Textiles, Food organics



WHAT ROLES AND CAPABILITIES FACILITATE REGIONAL CE TRANSITIONS? (KNOWN IN NL... AU?)



Competencies of transition brokers

-  To be entrepreneurial, dare to leave your comfort zone, persevere, be impatient and be willing to follow up with contacts
-  To excite and inspire others to cooperate
-  To think and act from a systems perspective but at the same time to be pragmatic
-  To get the idea of CE accepted in a variety of businesses and organisations, translate the desired actions into the language of other organisations and do not appear threatening
-  To act in the collective interest and be professional enough to stand above the parties
-  To have a very broad knowledge base in circular economy innovations, the business environment and political culture
-  To be able to open doors at all policy levels to remove barriers that need to be solved by governments

(After Cramer 2020, 2022)

But do these roles and capabilities apply in regional and remote Australia?

SAME, SAME BUT DIFFERENT?

Very preliminary results from survey of LGs
84/534 participants, 51 from remote and regional areas

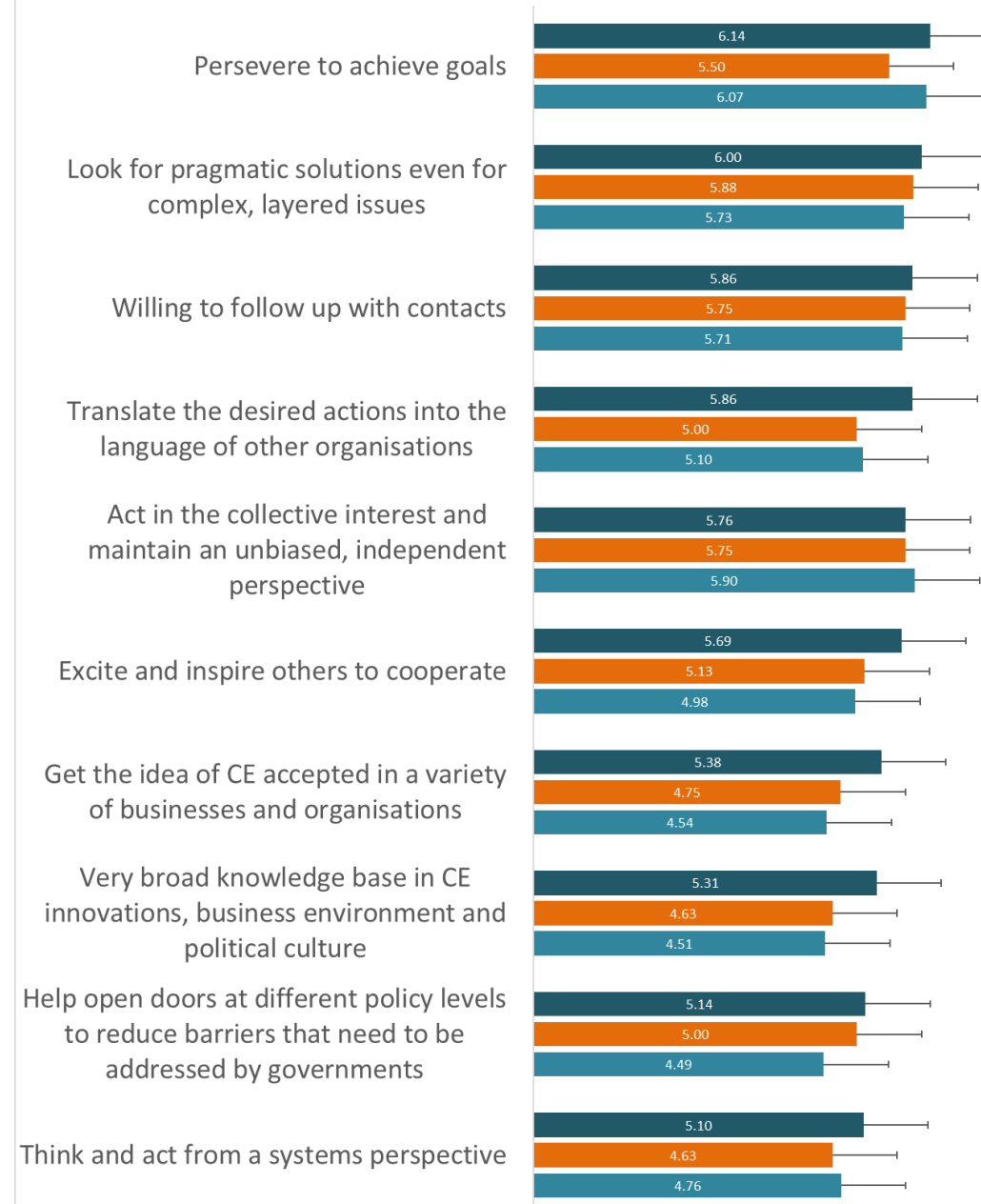
Promisingly strong / confident base
ESPECIALLY for regional & remote

- Build on
 - perseverance
 - pragmatism
 - relationships
- Help build
 - broad base CE knowledge
 - open doors to policy
 - systems approach

Self-assessed broker capability by remoteness

Mean (SD)

■ No % pop rem./reg. ■ Lower % pop rem./reg. ■ Higher % pop rem./reg.



IP5.02.03: Governing community-based resource recovery and circular economy initiatives

RQ: *What is the capacity of regional and remote local government to facilitate regional CE transitions? Where can we help?*

Want to get involved?

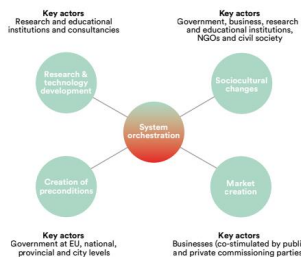
• Reach out

Stefan.Kaufman@monash.edu

- In what ways are local governments intermediaries and transition brokers?
- What's different outside of major cities?
 - Circular economy, or circular society?
 - Extractive regional economies?
- **Join ACE hub and look out for**
 - Full report Q1 next year
 - Regional and Remote LG special interest group space on ACE Hub
 - Call for Eols for place based pilots

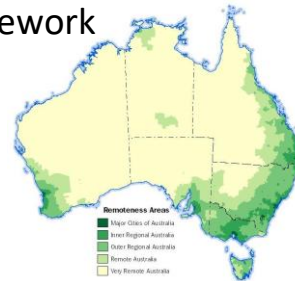
2022

- Situation assessments
- Literature review
- Desktop survey of orgs



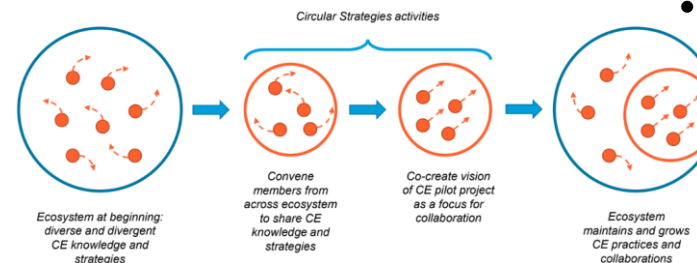
2023 Mar-Nov

- Survey of CE gov capacity
- Provisional reg/remote network governance AU framework



2023 Nov-Dec

- Share results Ace Hub
- Seek third party support to expand analysis and pilots



2024-2025

- Initiate co-design pilot(s) on network governance solutions
- Evaluation, scaling, translation

Circularity

2023

BROUGHT TO YOU BY



AUSTRALIAN
CIRCULAR
ECONOMY
HUB
PLANET ARK

21 NOV | 2:05 - 3:05 PM

Collaborative LGAs: Hubs and Hotspots Working Together

Moderator



Tuba Kocaturk

MInD Lab.
Deakin University



Emma Avery

EA Sustainability



Stefan Kaufman

BehaviourWorks,
Monash University



Guy Walsh

Living Edge



Marcus Geisler

Eastern Metropolitan
Regional Council

Circularity

2023

BROUGHT TO YOU BY



AUSTRALIAN
CIRCULAR
ECONOMY
HUB
PLANETARK

living edge®

Certified



Corporation



Circularity

2023

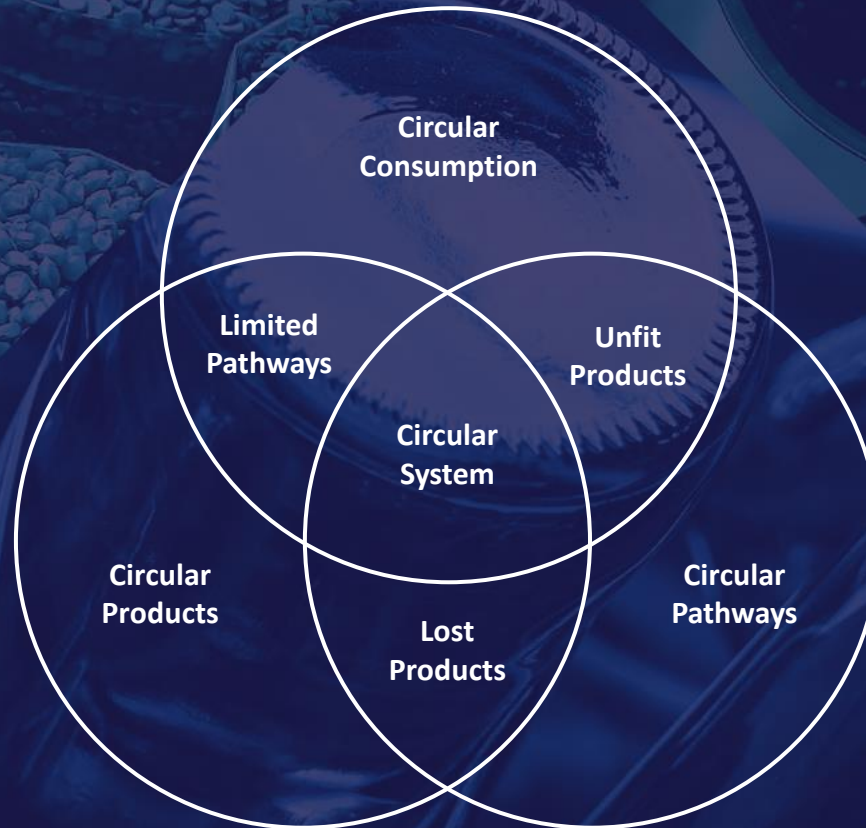
BROUGHT TO YOU BY



AUSTRALIAN
CIRCULAR
ECONOMY
HUB
PLANET^{ARK}

Living Edge & its Customers
Traceability & circular procurement models

Products & Brands
The products we add
to the system



**living
edge**® think circular

End-of-Life Pathways
A hierarchy of outcomes

Circularity

2023



BROUGHT TO YOU BY

AUSTRALIAN
CIRCULAR
ECONOMY
HUB
PLANET ARK

Fit for Office.
Making circularity a reality.

Fit for Office (FFO) is an initiative to design and establish an industry-led nationally accessible, voluntary product stewardship scheme for commercial office furniture in Australia.



Circularity

2023

BROUGHT TO YOU BY



AUSTRALIAN
CIRCULAR
ECONOMY
HUB
PLANET ARK

21 NOV | 2:05 - 3:05 PM

Collaborative LGAs: Hubs and Hotspots Working Together

Moderator



Tuba Kocaturk

MInD Lab.
Deakin University



Emma Avery

EA Sustainability



Stefan Kaufman

BehaviourWorks,
Monash University



Guy Walsh

Living Edge



Marcus Geisler

Eastern Metropolitan
Regional Council

Sustainable Development Goals



Circularity 2023

LGA hubs and collaborations



Marcus Geisler, EMRC CEO

Circularity 2023 Melbourne

Tuesday 21 November 2023

Our Collective Waste Strategy

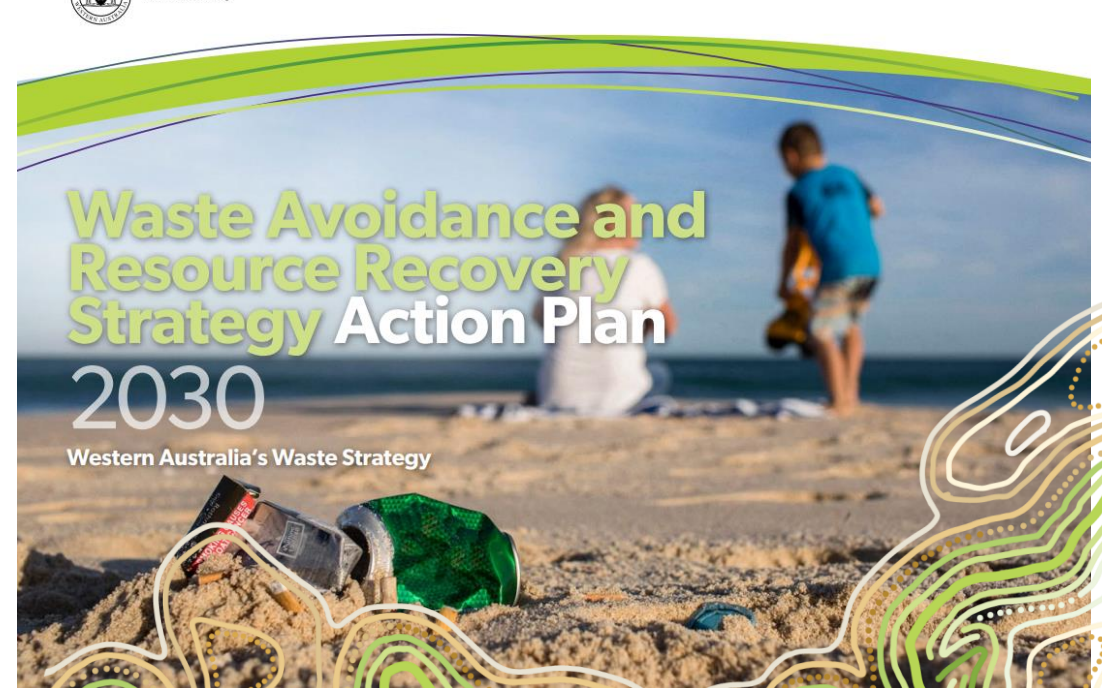
Avoid	Recover	Protect
<i>Western Australians generate less waste.</i>	<i>Western Australians recover more value and resources from waste.</i>	<i>Western Australians protect the environment by managing waste responsibly.</i>
<ul style="list-style-type: none">2025 – 10% reduction in waste generation per capita2030 – 20% reduction in waste generation per capita	<ul style="list-style-type: none">2025 – Increase material recovery to 70%2030 – Increase material recovery to 75%From 2020 – Recover energy only from residual waste	<ul style="list-style-type: none">2030 – No more than 15% of waste generated in Perth and Peel regions is landfilled.2030 – All waste is managed and/or disposed to better practice facilities



Waste Authority



Waste Authority

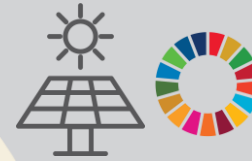


Strategic Review 2021 Outcome

**Resource
Recovery**



Net Zero



Landfill



EMRC Corporate Business Plan Alignment

The EMRC's Corporate Business Plan focuses on four areas:



9 INDUSTRY, INNOVATION AND INFRASTRUCTURE	11 SUSTAINABLE CITIES AND COMMUNITIES	12 RESPONSIBLE CONSUMPTION AND PRODUCTION	13 CLIMATE ACTION	17 PARTNERSHIPS FOR THE GOALS
Goal 9: Build resilient infrastructure, promote inclusive and sustainable industrialisation and foster innovation.	Goal 11: Make cities and human settlements inclusive, safe, resilient and sustainable	Goal 12: Ensure sustainable consumption and production patterns	Goal 13: Take urgent action to combat climate change and its impacts	Goal 17: Strengthen the means of implementation and revitalise the global partnership for sustainable development
This is achieved through circular economy focused resource recovery services and upgrading infrastructure to be sustainable.	This is achieved through responsible and effective waste management.	This is achieved through avoidance, reduction, recycling and reuse of waste and embracing sustainable procurement practices, and includes extended producer responsibility.	This is achieved through improved EMRC education and awareness-raising on climate change mitigation, adaptation, impact reduction and early warning.	This is achieved through encouraging and promoting effective partnerships, building on the experience and resourcing strategies of partnerships, data, monitoring and accountability.

Community Recycling Centre Network



Mathieson Rd



Baywaste



Ascot Place

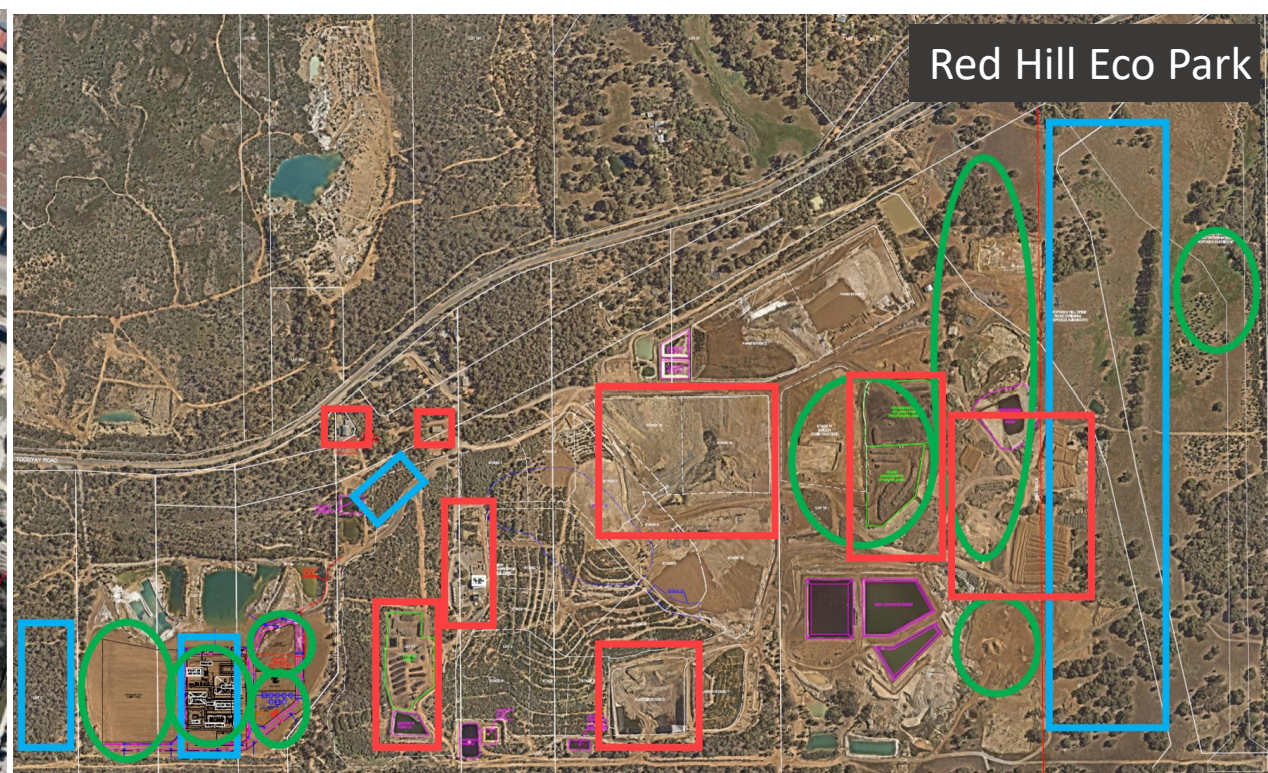


Coppin Road

EMRC Community Owned Infrastructure Network



EMRC Community Owned Infrastructure Network



Operations Red Hill



Operations – Hazelmere Eco Park



Timber processing



Recovery



Collection



Waste Transfer Station



Animal Bedding



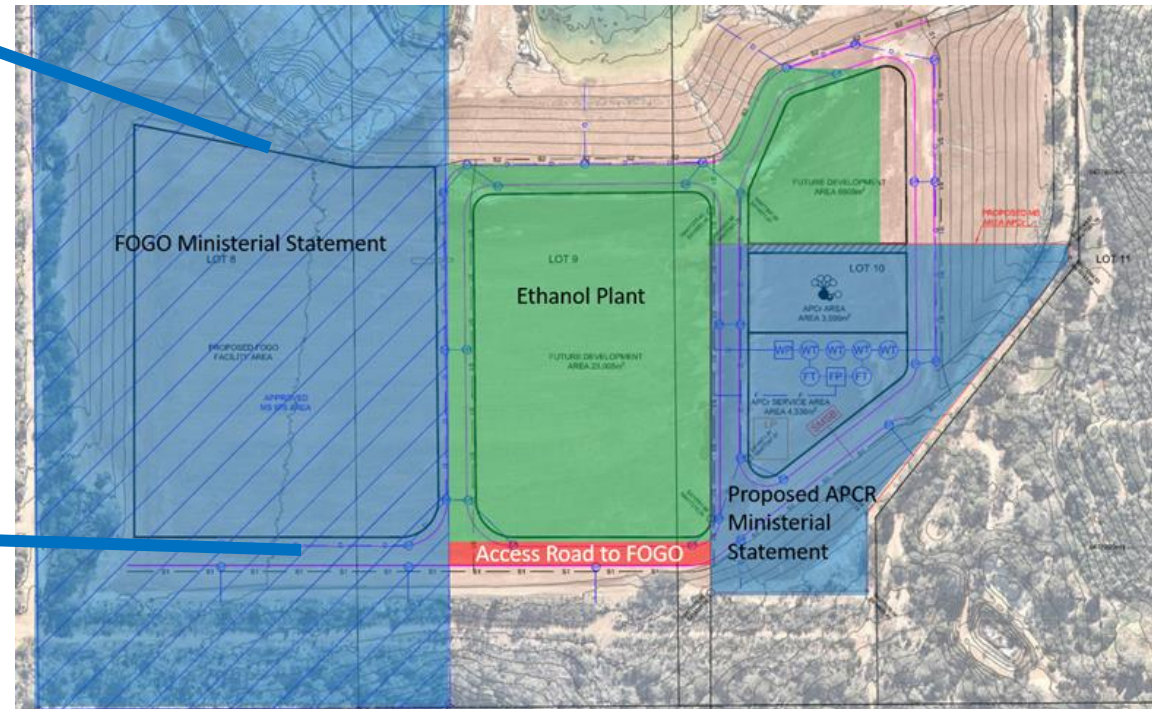
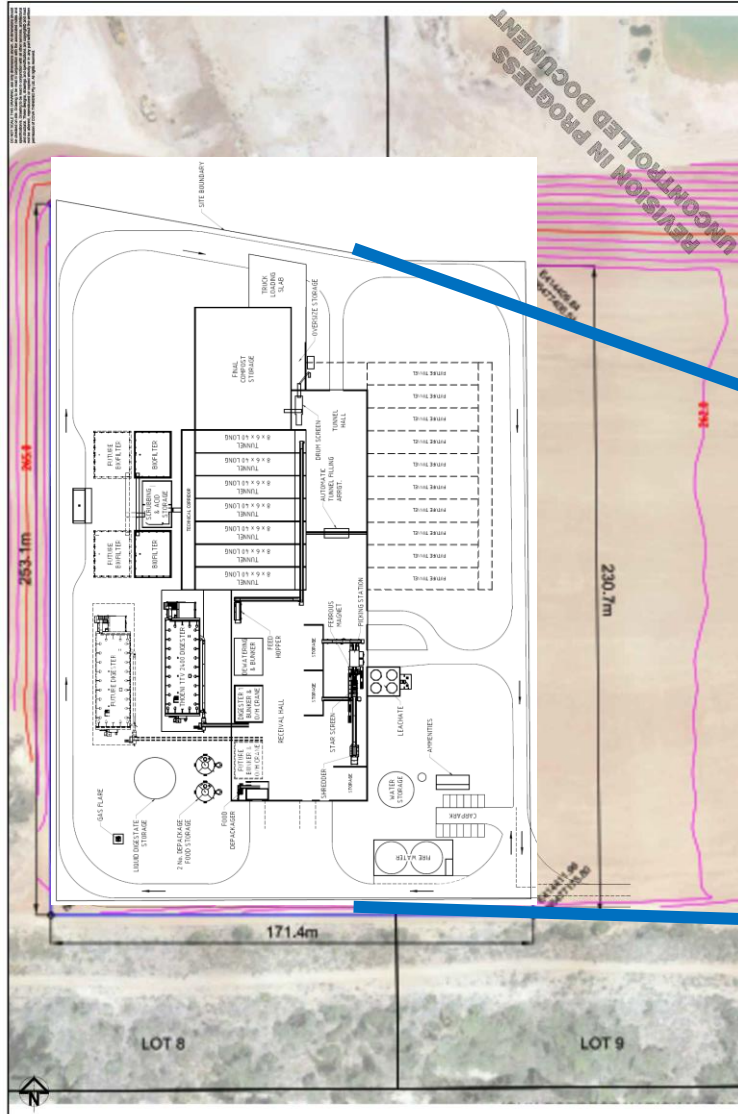
Syngas and BioChar



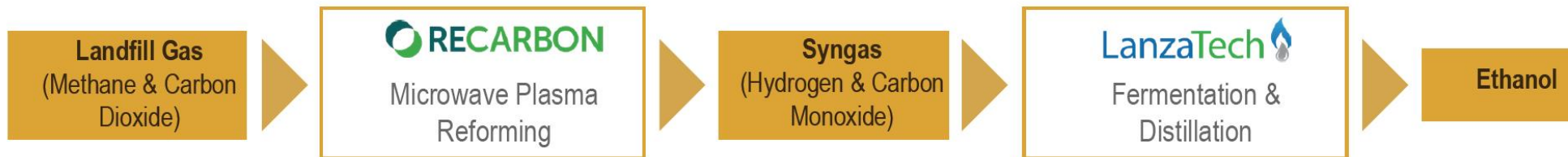
Landscaping

Projects – Red Hill

FOGO AD and Carbon to Products



Pilot Plant Process



Preliminary Plant Layout

This collaboration between a regional local government and a global energy company supports the **United Nations' Sustainability Development Goal 17**. To strengthen the means of implementation and revitalize partnerships for sustainable development.

**SUSTAINABLE
DEVELOPMENT
GOALS**

17 PARTNERSHIPS
FOR THE GOALS



Discovering areas of potential collaboration



EMRC: *‘Think Forward – Act Now – Act Local’*



(2022) Sustainability
Strategy 2022/23 -
2026-27



Regional Circular
Economy Horizon
Scan 2022



Food Organics &
Garden Organics
Recovery Strategy
2019



(2022) Revised
Strategic Plan
2017-2027



Sustainability Team
Program Plan
2024-2025



2023 EMRC
Stakeholder
Perception Survey



Annual Report
2021/2022



Annual Report
2022/2023



Corporate Business
Plan 2023/2024

Thank you